

SINAI UNIFIED ORGANIZATION

BACKGROUND RATIONALE

Sinai Unified, a CBO in Viwandani collaborated with the ARISE Project to address the diverse needs of marginalized communities in Viwandani, focusing on older persons. Through targeted initiatives such as facilitating linkage to social protection services, providing training in urban farming, and providing a safe space for older persons to meet and interact, Sinai Unified has accorded Older Persons a platform to discuss issues affecting their lives and advocate and act for their improved health and well-being.

ACHIEVEMENTS

1 Social Protection Linkages

32 older persons linked to INUA JAMII program for cash transfer

- Stakeholder meetings sensitized the older persons on available services for them including the eligibility criteria



6 Economic Empowerment

- 47 older persons** trained on financial capability
- 47 older persons** trained on entrepreneurship
- 47 older persons** supported with business start-ups / business expansion



Urban Farming in existing space

2 Urban farming Training and Implementation

- 55 older persons** trained on urban farming & nutrition by Ministry of Agriculture Extension Officers
- 9 older persons** have set up kitchen gardens on sacks and recyclable items



7 Disaster responsiveness

- 25 older persons** were supported with food & non-food stuff
- 5 older persons** relocated

3 Medical check up and referral

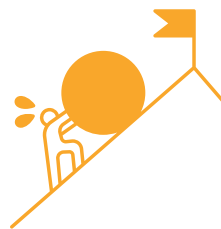
- In collaboration with Redcross and Nairobi City County, **211 (47 older Persons)** benefited from medical check-up **29 people** were diagnosed with elevated blood pressure **6 older persons** referred for further care **1 female community member** referred for cancer management



4 Older persons support Groups

- 3 support groups** for older persons established Canada support group has been saving for poultry keeping Sunshine produces house detergents for sale. Mashujaa runs a merry go round, aims to register as a SHG, start table banking and keep poultry

CHALLENGES



- Health challenges: Older persons sometimes too ill to attend group activities
- Some older persons unable carry out envisioned businesses due to age, illiteracy
- Fixed mindset among older persons: some unwilling to move from their houses, or take up different business ideas
- Inaccurate personal documents, e.g. ID, hindered registration to Inua Jamii
- Floods
- Demolitions following flooding

OUR MAIN FOCUS ISSUE

- Addressing Poor Nutrition** In the ARISE project, Sinai Unified focused on the prevalent problem of poor nutrition among older persons
- Social Protection for Older Persons** Prioritizing linkage of older persons to social protection services ensuring they have access to essential resources and support systems to enhance quality of life



5 NHIF Coverage

- Supported **21 older persons** register for NHIF, activate dormant NHIF accounts, and rectify NHIF accounts' errors
- 21 older persons** linked to NHIF



CALL TO ACTION

We advocate for enhanced partnership and collaboration to further enhance the well-being of older persons, elevating their living conditions and fostering sustainable solutions. We urge the government to allocate additional funds for procuring and distributing medications especially for chronic conditions including Non-Communicable Diseases. More community based participatory research with older persons using innovative methods such as photovoice for amplified voices.